

EUREKA TEST CENTER

State of the art test facility



FACILITY DESCRIPTION



The Center:

We are proud to present the most advanced indoor test facility for pumps and generators in Europe.

The center was completed in 2014 and is fully ISO 9906 Compliant.

It is located in Sørumsand outside Oslo, in the same premises as our production and assembly facilities.

Testing Capabilities Pumps:

Designed for full scale test of almost any size, capacity, effect and type of pump.

- Dry mounted pumps.
- Line shaft pumps and electric submersible pumps in lengths up to 60 meters.

Testing Capabilities Fire Water Pump Packages:

Full scale testing of all NFPA20 fire water pump configurations which includes:

- diesel generator sets
- full length electric submerged pumps.

Testing Capabilities Essential & Emergency Generators:

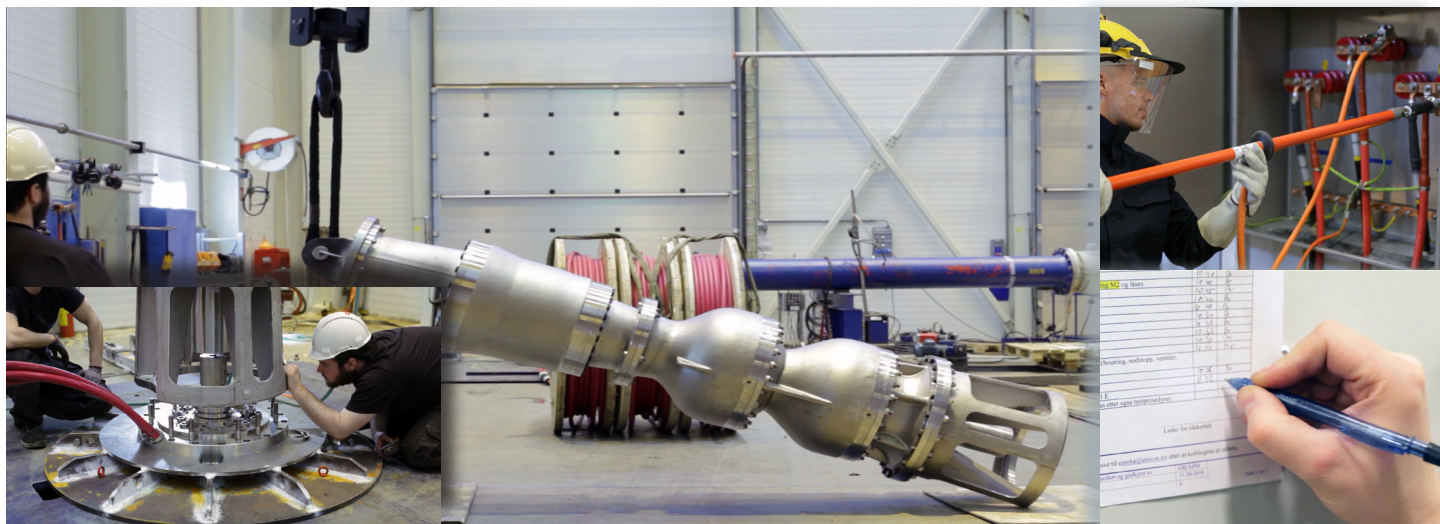
- Full scale testing of essential and emergency generators
- Facilities to perform synchronization test of up to 3 generator sets



Facilities:

- Indoor to ensure controlled and stable test conditions all year round.
- Fully equipped with loadbank, frequency converter and transformers
- State of the art measuring equipment for data collection covering all required parameters.
- Dedicated area with sound proofing for testing of diesel driven generator sets.
- Windows allows for a convenient and safe way to follow all testing from outside the cell.
- Control Room, where performance-, vibration- and power control is carried out.
- Conference room next door with full overview of the test station and online data on screens.
- Directly accessible with trucks for large & heavy equipment.
- Immediate access to our warehouse, machining facilities and skilled personnel.
- Good access to road and rail-road.
- Close distance to Oslo deep-water port and OSL Gardermoen airport.

CAPABILITIES



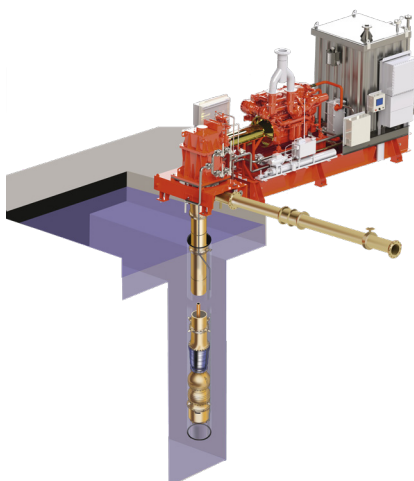
Pump Test Center:

Test Area:

- Room size: 16 x 18 m
- Roof height: 12 m
- Crane: Overhead 50/10 tons
- Test basin: 1 000 m³
- Test well: 60 m deep and 1,8 m in diameter.

Test Facility:

- Designed to run pumps up to 5 MW and up to 60 m length.
- Flowrates: up to 10 000 m³/h
- Power supply: 50 Hz/60 Hz up to 5 MW
- Voltage: 690 V, 4,16 KV, 6,6 KV or 12 KV
- Booster pumps: 4 off with 1 500 m³/h capacity each



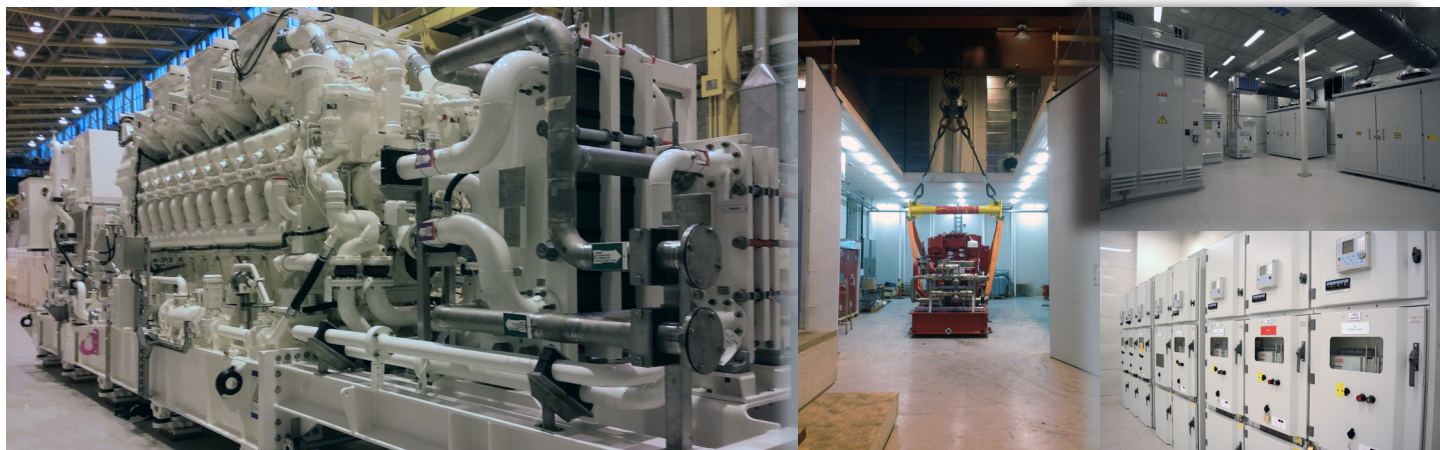
Generator Test Cell

Test Area:

- Cell size: 15,6 x 9,2 m
- Roof height: 5,1 m
- Door opening: 4 m wide, full height.
- Roof can be lifted off to give easy access with crane.
- Exhaust connection: Up to 500 mm (20 Inches)
- Cooling: Fresh water

Loadbank:

- Type: Crestchic 6.0 MVA resistive/reactive. Can be extended to any load required.
- Voltage: 400 V / 440 V / 690 V / 4,16 KV / 6,6 KV
- Current/Load:
60 Hz – 4,8 MW (cos phi 0,8)
50 Hz – 2,16 MW



EUREKA PUMPS AS is a Norwegian pump supplier with more than 40 years of experience in the oil & gas and marine industry, offering a range of pumps and generator sets that covers a majority of applications. EUREKA PUMPS also offers services for upgrading, modification, equipment testing, installation and commissioning.

EUREKA PUMPS is a market leader among companies operating on the Norwegian Continental shelf, and it is also present in International markets with selected applications, based on own technology. EUREKA PUMPS main office is in Oslo (Fornebu), Norway, and has advanced service facilities along the Norwegian coast. EUREKA PUMPS also has branch offices in Houston, St. Johns and Kuala Lumpur.

EUREKA PUMPS is one of three companies in the ALIGN group, a leading supplier of production equipment and safety critical products and solutions. ALIGN offers services ensuring continuous production, a perspective that safeguards optimal operations and lower life-cycle costs. The ALIGN group is owned by Convento Capital and HitecVision.

